

MANUFACTURING SAFETY ALERT

Ask Yourself
"Could it happen here?"

DESCRIPTION OF EVENT

Arc Flash

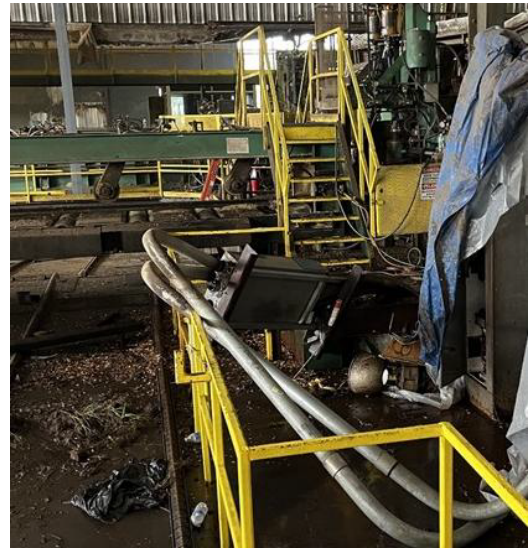
During demolition of an old building, a structural wall girt was being removed when a 480V panel fell into a designated walkway. Instead of stopping work, the contracted crew tried to remove the panel by cutting the conduit using a torch and reciprocating saw. The saw blade made contact with live wiring, causing an arc flash. Fortunately, no one was injured.

The day before the incident, mill management conducted a walkthrough with the contractors, clearly identifying electrical equipment and areas to avoid during demolition.

Following the arc flash, demolition work was suspended pending an investigation and corrective actions by the contractor.

SUGGESTED ACTIONS

- If conditions around energy sources change during demolition, work must be stopped immediately and reassessed by qualified personnel.
- All live energized components should be identified, verified and clearly marked before demolition begins.



MOST IMPORTANT TAKE AWAY

Before starting any demolition work, make sure all nearby energy sources in the work area have been identified, verified and clearly marked, and stop work if conditions change.

