

MANUFACTURING SAFETY ALERT

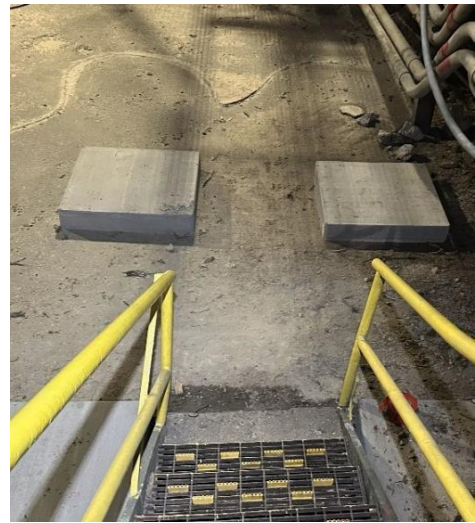
Ask Yourself
“Could it happen here?”

DESCRIPTION OF EVENT

Tripping Hazard

An employee was descending a staircase on the way to a break when he tripped on the final step and fell forward. When he landed, his left hand struck a recently poured concrete footer located at the base of the stairs.

The employee sustained lacerations on three fingers that required sutures.



SUGGESTED ACTIONS

- Reinforce safety messaging on slips, trips and falls often. Slips, trips and falls are **THE** most common workplace injury.
- Conduct routine inspections of work areas. Ensure work areas are well maintained with good housekeeping, clear walkways and secure floor coverings.
- Increase awareness of changing work environments, such as during construction or maintenance.
- Positional awareness and understanding where physical hazards are located can reduce the probability of slips, trips and falls incidents.

MOST IMPORTANT TAKE AWAY

Always maintain 3 points of contact (two hands and one foot, or two feet and one hand) when going up or down stairs and ladders. And be mindful of your foot placement to maintain proper balance and control.

Proper PPE including gloves, should always be worn to protect employees from both expected and unforeseen incidents.

