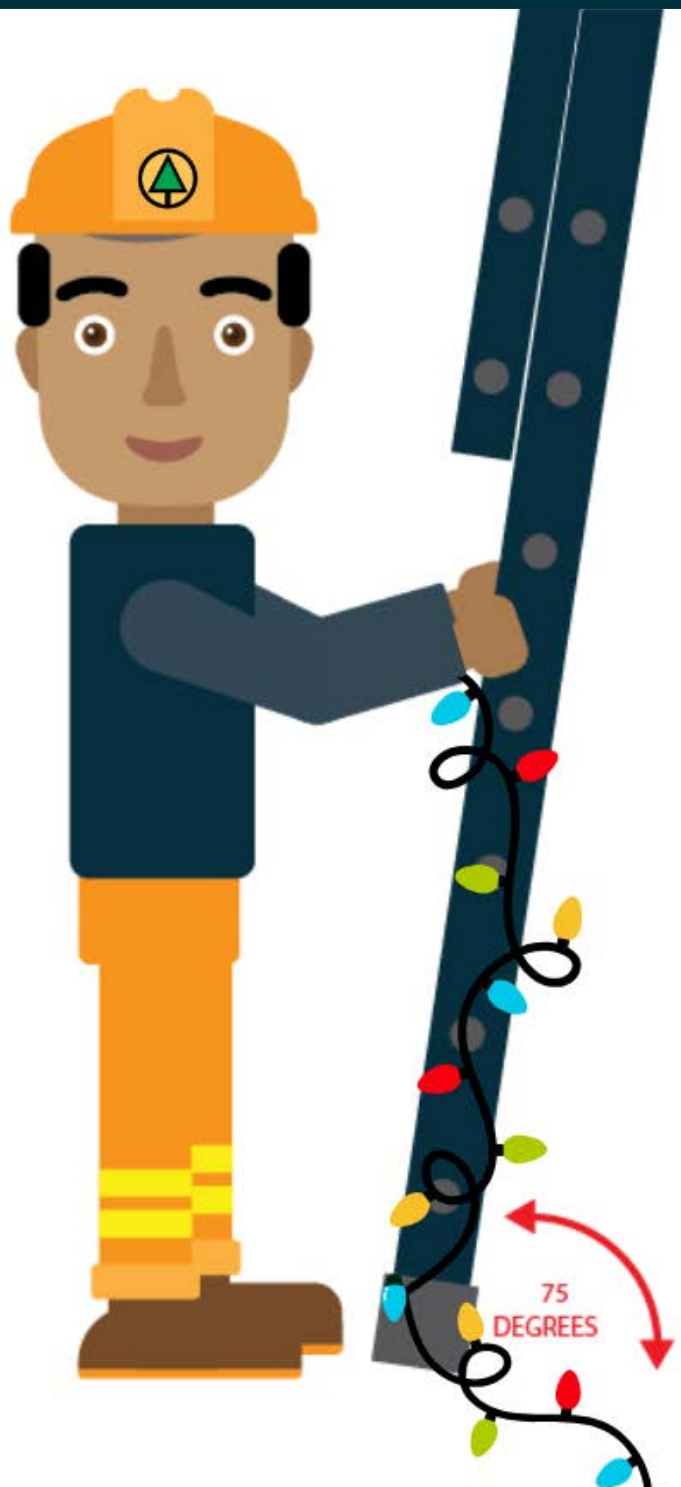


# SAFETY TIPS FOR HOLIDAY DECORATING

Safety is a priority in the workplace, but it often doesn't receive the same attention at home. The risk of injury is significantly higher outside of work, especially during the holiday season. Here are some essential ladder and decoration safety tips to ensure your well-being.

## HOLIDAY SAFETY TIPS:

- LADDER SAFETY
- DECORATION SAFETY



# SAFETY TIPS FOR HOLIDAY DECORATING



## LADDER SAFETY:

As the holiday season approaches, it's time to get out the ladder to hang festive lights and decorations on eaves, trees or tall bushes and place the star on top the Christmas tree. Falls from ladders are a major cause of injury and fatalities, but of these accidents can be avoided by following these safety tips:

### **FOLLOW THESE SAFETY TIPS:**

- Inspect the ladder before use.
- Maintain three points of contact.
- Set up the ladder correctly: The proper angle for a leaning ladder is approximately 1:4 or 75 degrees, with the rungs or treads level and the ladder fully opened.
- Use stepladders safely: Ensure they are fully unfolded with the braces locked.
- Ensure stability: Place the ladder on a firm, level surface.
- Do not place a ladder on objects to gain extra height.
- Avoid setting up a ladder in front of an unlocked door.
- Ensure stepladder spreaders are fully extended and locked.

## DECORATION SAFETY:

Sprucing up your office and home for the holidays might be a time-honored tradition. But use caution and inspect those festive decorations carefully - they might be fire hazards waiting to happen!

### **FOLLOW THESE SAFETY TIPS:**

- Place decorations in safe areas and avoid placing them near fire hazards and exits.
- Keep decorations away from heat sources, including office equipment.
- Install holiday lights properly: Do not link more than three strands, and turn off lights when unattended.
- Use nonflammable decorations and battery-operated candles.
- Remove paper and flammable materials from outlets and ignition sources.
- For live trees: Choose a fresh one, refill water regularly, and discard when dry.
- Position the tree away from heat sources like fireplaces or vents.
- Avoid plugging GFIs into other GFIs.

### **REMEMBER:**

**By keeping these safety tips in mind, you can enjoy a festive and safe holiday season.**

Scan the QR code with your phone's camera to access all BCFSC Crew Talks and to subscribe.

