



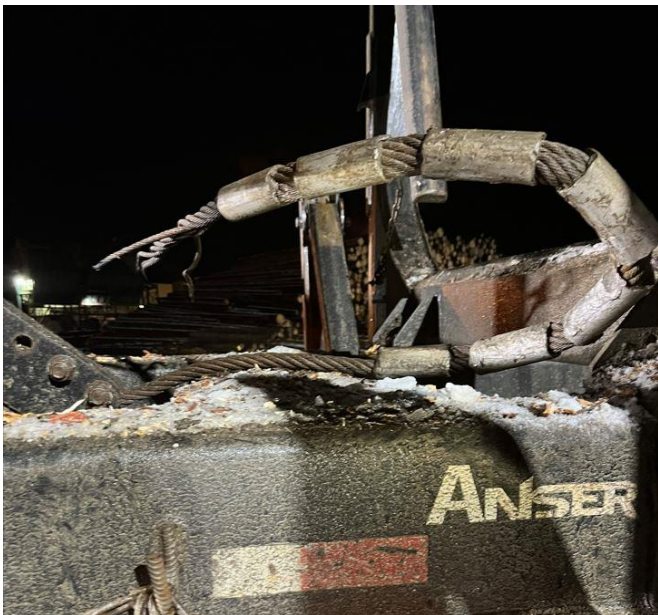
TAG

# SAFETY ALERT

## Molly Failure

### Description of the Event:

- A log truck driver started lifting his trailer up with the trailer hoist.
- When the trailer was one foot off the truck, the molly broke and the trailer fell.
- The driver was not injured and there was no damage to the truck and trailer.



### Contributing Factors:

- Lack of maintenance.
- Lack of inspections.
- Worn, frayed, damaged wires.

### Suggested Actions:

- Inspection molly's after every load.
- Regular maintenance including replacement every 6 months and/or after the winter season.
- Replace molly if damaged or worn.
- Review [BCFSC's Molly Lift Strap Safety Inspection](#) video.



**BC Forest Safety**

Safety is **good** business

[Click here](#) to access this safety alert from our website.

BCFSC welcomes all incident or near-miss submissions. If you have an incident you'd like to share or would like to subscribe to the **TAG Safety Alert** [click here](#). BCFSC will review and remove all identifying information to protect your privacy.

Connect With Us: [bcforestsafe.org](https://bcforestsafe.org) | [Facebook](#) | [Twitter](#) | [YouTube](#) | [LinkedIn](#) | [Instagram](#)

Disclaimer: TAG Alerts are voluntarily submitted by workers or companies. We encourage the sharing of information that can help improve safety for all workers. The BC Forest Safety Council is not responsible for accuracy of content.



**BC Forest Safety**

Unit 8C - 2220 Bowen Road, Nanaimo, BC, V9S 1H9  
Central BC: 2666 Queensway, Prince George, BC, V2L 1N2  
Toll Free: 1.877.741.1060 | [bcforestsafe.org](https://bcforestsafe.org)