

MANUFACTURING SAFETY ALERT

Ask Yourself
"Could it happen here?"

DESCRIPTION OF EVENT

Flash Ignition in the Fuel Metering Bin Overflow Hatch

An employee was instructed to clean out the ledges in the Fuel Metering Bin South Overflow Door. He opened the latch door, and found the ledges covered in hog but free of sparks.

The material in the bottom of the metering screw approximately 8' down was smoldering.

The employee used a short air wand while standing over the hatch and blew down the ledges. While blowing down the ledge, a flash ignition occurred and blew a large amount of burning material in his face.

The flash was a quick burst and left a superficial singe on his face, ears, neck, and hair. It did not burn his gloves, coveralls, hardhat or glasses. The employee was seen at the hospital and returned with no restrictions.

SUGGESTED ACTIONS

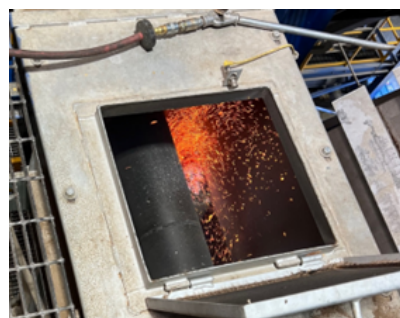
- Build a procedure for cleaning off the ledges.
- Turn off the SPG while doing the job.
- Use a scraper tool to scrape the ledge off instead of air. The scraper has a long handle so the employee can stand away from the hatch.
- When using an air wand near the hatch, a face shield is required.
- Wait until the furnace has died down or before the material in the screw has been pushed through to do the job. (Bin must be full to create a seal between the fire and the shelf or the fire must be mostly out before attempting).
- If doing the job after the furnace has burned out, use a water hose to lightly mist the area first.



Picture 1 – view into the hatch on day 2 after the furnace burned out



Picture 2 – view onto the ledge on day 2 after the furnace burned out



Picture 3 – view onto the ledge directly after incident

MOST IMPORTANT TAKE AWAY

Flash fires are dangerous and can cause significant injuries. Provide all employees with education and training on flash fires, how they occur and how to minimize the potential for flash fires.

