

# MANUFACTURING SAFETY ALERT

**Ask Yourself**  
*"Could it happen here?"*

## DESCRIPTION OF EVENT

### Finger Tip Amputation - Serious Incident

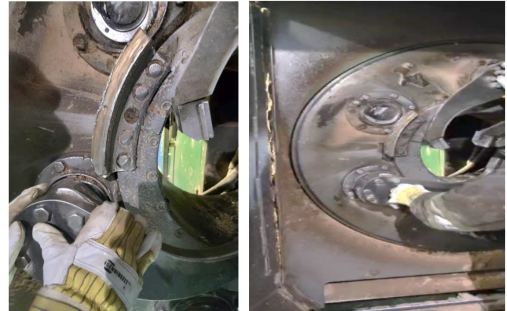
A barker operator called to have barker tool arm inspected. Millwrights were assigned to the task and locked it out.

The operator tested the lock out which was verified by the cut off saw operator. A FLHRA was then completed.

The millwrights pulled the first ring and found a tool arm had broken off and one of the knives was chipped. They decided to replace the tool arm after the day shift finished but began to change the chipped knife. One of the millwrights used his impact on the knife tip and tried to steady the ring which was turning due to the missing tool arm. The locking pin that can be inserted to prevent the ring from moving was not used.

As he tried to steady the ring, his hand slipped on the tool arm he was holding as it passed the bark cutter severing the tip of his right middle finger.

The investigation found that while a FLHRA was completed, all hazards were not identified including pinch points and other risk to hands.



## SUGGESTED ACTIONS

- Recommend changing work procedure to use the locking pin when completing work on the ring.
- Conduct a crew talk to review the incident with a focus on hand and finger injuries.

## MOST IMPORTANT TAKE AWAY

**Recommend changing work procedure to include use of the locking pin when completing work on the ring.**

**Ensure all relevant workers are trained in the new work procedure requiring the use of the locking pin.**

