

# MANUFACTURING SAFETY ALERT

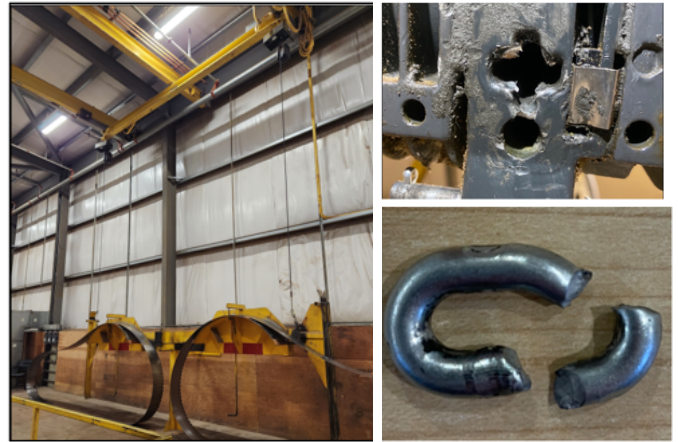
**Ask Yourself**  
*"Could it happen here?"*

## DESCRIPTION OF EVENT

### Bandsaw Hoist Failure - Near Miss

Sawfilers were lowering sharp bandsaws from the saw gallery to the canter bandmills when the chain hoist carrying the saw cradle and saws failed and the loaded saw cradle fell onto the equipment below. The Sawfilers were following safe work procedures and were standing in the designated safe area.

Excessive wear on the chain guide caused the chain to twist and break during the previous saw lift. When the Sawfilers lowered the sharp saws, the chain ran out causing the cradle to fall.



- Broken chain link found in chain box following the incident.
- Believed that the chain broke while lifting cradle at the end of previous shift.
- Once the hoist was used to lower saws the following day the chain would have run out and run through the hoist allowing load to drop.
- Excessive wear on the chain guide.
- Believed that the chain twisted while passing through the guide causing it to break.

## SUGGESTED ACTIONS

- Conduct a risk assessment on lifting devices and consider increasing third-party inspections based on frequency of use.
- Ensure third-party inspections are detailed and cover each component of a lifting device.
- Ensure cranes and hoists are being used as per manufacturers specifications.
- Create procedures that keep employees in the clear in the event of a failure.
- Perform a pre-use inspection of the hoist before every shift (OHSR 14.35).

## MOST IMPORTANT TAKE AWAY

**Conduct risk assessment on lifting devices and consider increasing frequency of third-party inspections based on frequency of use.**

**Perform a pre-use inspection of the hoist before every shift (OHSR 14.35).**

