

MANUFACTURING SAFETY ALERT

Ask Yourself
"Could it happen here?"

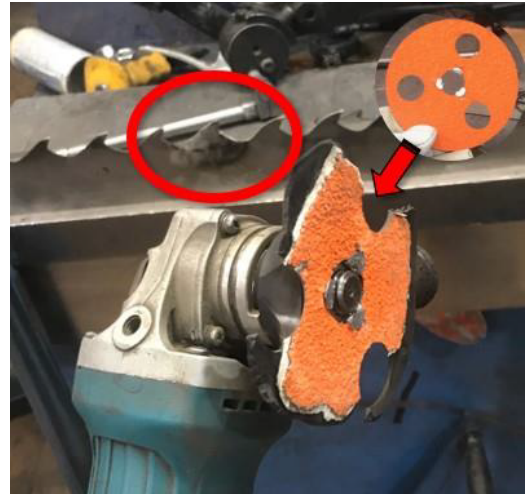
DESCRIPTION OF EVENT

Angle Grinder Incident

An employee was using an angle grinder with a sanding disc attachment to sharpen a welded saw tooth. While completing this task the sanding disc hooked the tooth causing the disc and backing plate to break apart, striking the employee. The employee was wearing a face shield, but it was not fully lowered, and debris flew into his face, causing a laceration.

Potential Hazards

- The sanding disc had a three-hole transparent design which has potential to catch on objects and break apart.
- There was no guard installed on the angle grinder.
- The employee did not put the face shield all the way down because it was damaged and scratched affecting visibility.



SUGGESTED ACTIONS

- Do not use this type of sanding disc and communicate its risk potential to other operations.
- Audit all angle grinders to ensure they have the proper guards in place and are in safe operating condition.
- Review safe operating procedures for use, care and maintenance of angle grinders with all maintenance employees.
- Ensure appropriate PPE is in good condition and used correctly.

IMPORTANT TAKEAWAY

- Ensure workers use PPE correctly and replace when required.
- Ensure all angle grinders have the proper guards in place and are in safe operating condition.
- Consider removing this type of sanding disc from site.

