

MANUFACTURING SAFETY ALERT

Ask Yourself
“Could it happen here?”

DESCRIPTION OF EVENT

Sawmill - Stacker Strip Unscrambler

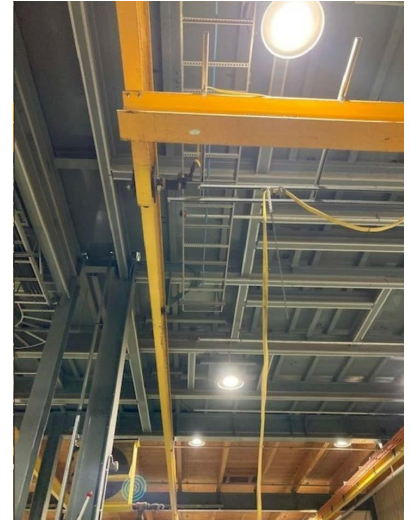
Millwrights were installing a new unscrambler chain on the stacker one-strip conveyance system. The old chain had been removed and the new chain was being lifted in place for installation.

During the process, a one-ton overhead crane (under mounted) was used in combination with a 1.5ton lever hoist. The overhead crane and the lever hoist were pulling against each other. The overhead crane carriage was up against the crane stops on the bridge. The stops failed and the crane rolled off and landed in the conveyor.

There was no injury, but the crane was destroyed.

SUGGESTED ACTIONS

- Ensure that crane stops are properly secured.
- When possible, install fixed mounts that cannot break away.
- Ensure that all drop bars are in place on all crane bridges and the crane hoist.
- Do not side pull cranes.



MOST IMPORTANT TAKE AWAY

Always ensure crane stops are properly secured and are included in the overhead crane pre-use inspection.

