

# MANUFACTURING SAFETY ALERT

Ask Yourself  
"Could it happen here?"

## DESCRIPTION OF EVENT

### Lockout Incident - Pry Bar

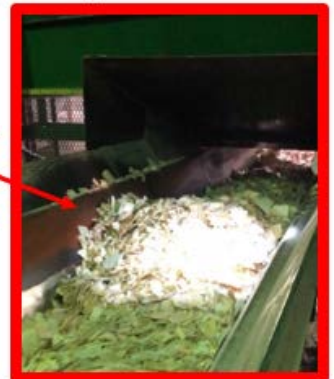
In August 2020, a millwright noticed chips building up in the Chip Conveyor. The millwright thought a 2x4 block was holding up the chips so without stopping and locking out the equipment, the millwright used a 5' bar to free up the jam-up while the conveyor was running.

What was not identified was the block was in fact a hold down shoe for the drive chain.

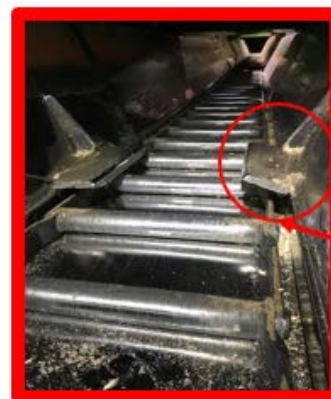
The bar became jammed in the hold down shoe and the moving chain caused the bar to pivot striking their forearm with the bar and the side wall of the conveyor causing a fracture.

## SUGGESTED ACTIONS

- Inform all crews to make them aware of the requirement for lock out, verification and a hazard assessment before attempting to use pry bars in conveyors.
- Develop and implement a pike pole and pry bar safety procedures.
- Inspect other areas in the mill with this potential risk that are not adequately guarded or identified.



What the Millwright observed



Where the pry bar got pinched

## Most Important Take Away

- Before attempting to use pry bars in conveyors, a lock out, verification and hazard assessment must be completed.

