

MANUFACTURING SAFETY ALERT

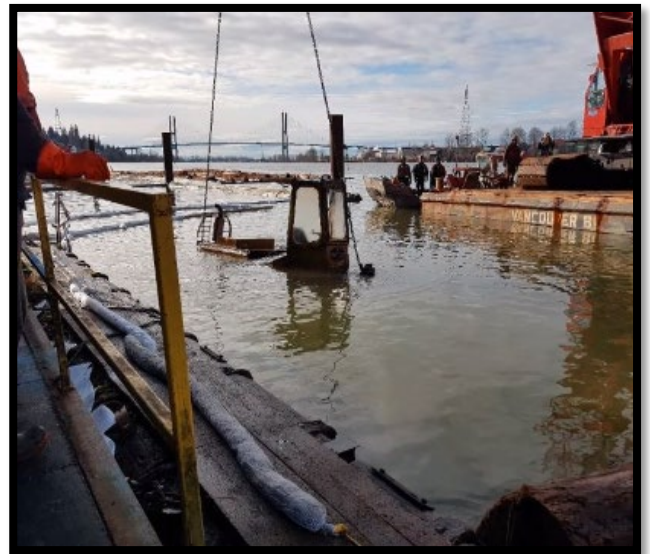
Ask Yourself
“Could it happen here?”

DESCRIPTION OF EVENT

A boom boat (sidewinder) rapidly sank in 290' of water while stowing bundles. The operator was able to jump clear and was uninjured.

The sidewinder remained submerged after resting on the bottom at low tide. When the tide rose, the sunken boat did not resurface.

Possible Causes: The sheared drive line mounting bolts exposed a 24” hole in the hull or the hull was impacted by a log end that created a hole.



SUGGESTED RECOMMENDATIONS

1. Do pre-trip inspections and confirm no (minimal) water in the hull.
2. Complete regular maintenance on the hull to prevent rust weak spots.
3. When boat is out of the water, conduct thorough inspections.
4. Watch for protruding logs from bundles, especially small diameter logs.
5. Install high-water alarm in the hull.

MOST IMPORTANT TAKE AWAY

Conduct pre-trip inspections to accurately identify hull weak spots or excessive water in the hull.

