



BC Forest Safety

Safety is **good** business

Crew Talk

Working Under / Around Vehicles

Scope



Between 2015 to spring of 2019 there were 6 fatalities. More in the previous five years



In most of these cases, the operator failed to secure vehicle before attempting work under or near the equipment



The purpose of this presentation is to facilitate a discussion with crews about how to prevent similar incidents

Pick-up Truck Fatality 2019

- 100 Mile House - February 11, 2019
- A worker was fatally injured when the pickup truck he was working underneath moved unexpectedly and he was run over.

Pick-up Repair Fatality 2018

- Peace Country - September 20th, 2018
- A forestry worker was repairing the front steering of a pickup truck, when the truck moved unexpectedly and he was struck.



Logging Truck Fatality 2016

- Near Fraser Lake – January 31, 2016
- A 23-year-old man was killed after being run over by an empty logging truck that he and a co-worker were trying to repair. They stopped on a logging road and were trying to fix a mechanical issue at the time of the incident.

Contributing Factors

From incident report:

- Truck parked on a slope
- No chocks applied and none available on the vehicle
- Failure to recognize the hazard of working under a vehicle on an icy slope



Tractor Jumpstart Fatality 2016

- Prince George – August 9, 2016
- The owner of a log hauling company was fatally injured while working around his shop. He was jump starting a tractor when it moved inadvertently, pinning him under the rear wheels.



Contributing Factors

From incident report:

- Vehicle left in gear while maintenance was being performed
- Parking brake not applied
- Safety engineering controls (starting in gear prevention) bypassed
- No chocks applied before maintenance



Logging Truck Fatality - 2016

- Midway – November 13, 2016
- A log truck driver was fatally injured when he was run over by another log truck in a maintenance yard.



Service Truck Fatality 2015

- Ladysmith – October 14, 2015
- A worker was removing the driveline from a shop truck when the truck rolled over him causing fatal injuries.



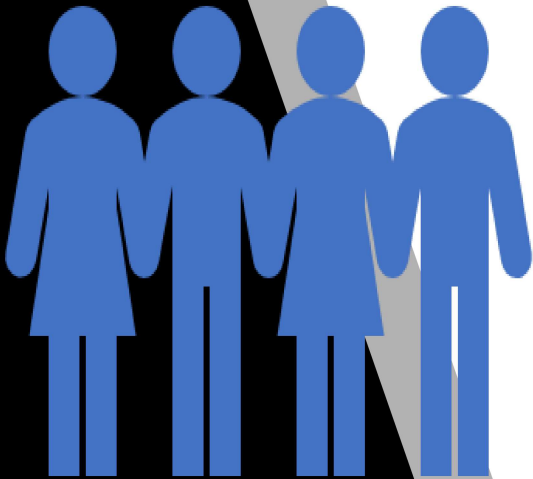
Contributing Factors

From incident report:

- Truck parked on a sloped driveway
- Vehicle not chocked and emergency brake was not fully engaged
- No one else was aware that the worker was conducting repairs on the vehicle



Discussion



- What about these incidents is similar?
- What can we do to prevent these types of incidents here?
- What individual commitment(s) will you make?
- Are there any barriers to effectively preventing these incidents? How can we remove these barriers?
- Where can someone go for more information?

Best Practices

- Immobilize your vehicle - **Every time!**
 - **Chock it - Block it - Lock it**
 - **Chock it – Set "maxi" or emergency brake. Use chocking blocks appropriate to the machine.**
 - **Block it – Block up any piece of equipment that could fall on you.**
 - **Lock it – If vehicle can be locked out, do it.**



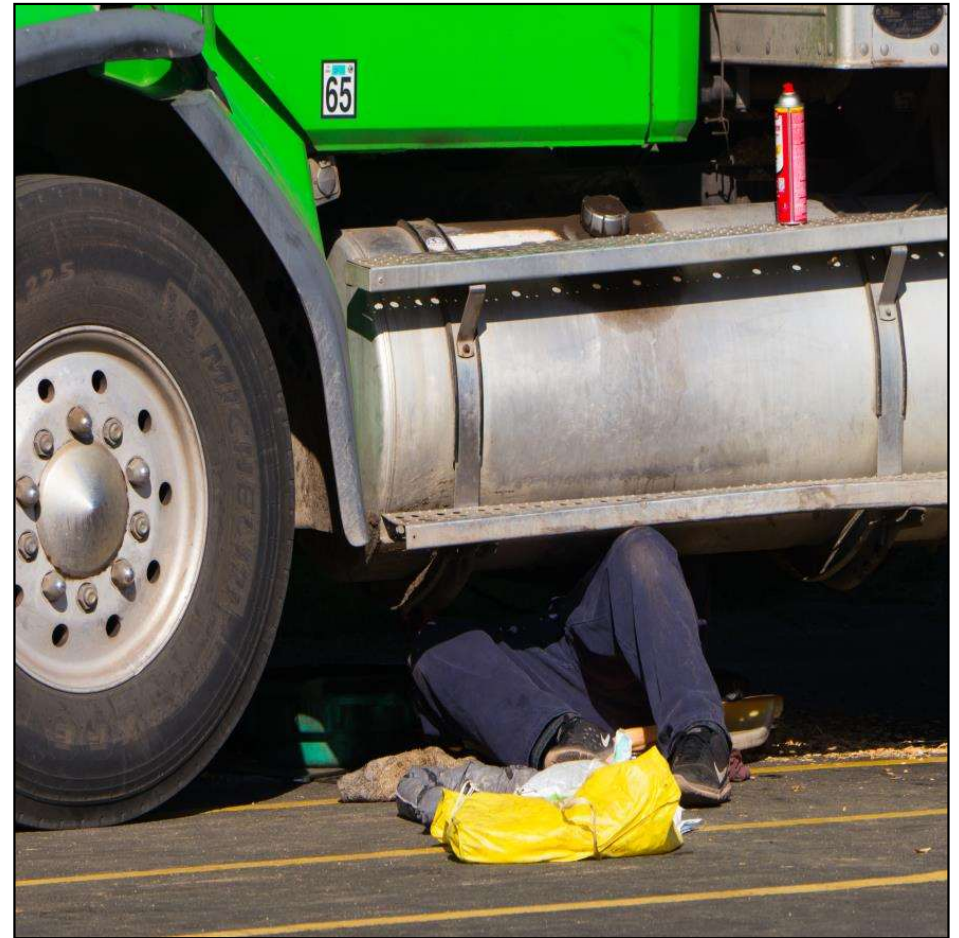
Best Practices

- Avoid working under vehicles alone
 - If absolutely required, ensure that you let others know what you are doing
- Follow all yard/worksite communication procedures



Best Practices

- If you see a gap, hazard or potential improvement, speak up!



Resources

- WorkSafeBC Safety Bulletin:
www.worksafebc.com/en/resources/health-safety/hazard-alerts/improperly-secured-vehicles
 - Working Safely Under Vehicles | Lockout Resource Package | Lockout and Live” Poster
www.bcforestsafe.org
-
- If you would like to order the free Lockout and Live poster or sticker, email info@bcforestsafe.org

Questions?

