

MANUFACTURING SAFETY ALERT

Ask Yourself
“Could it happen here?”

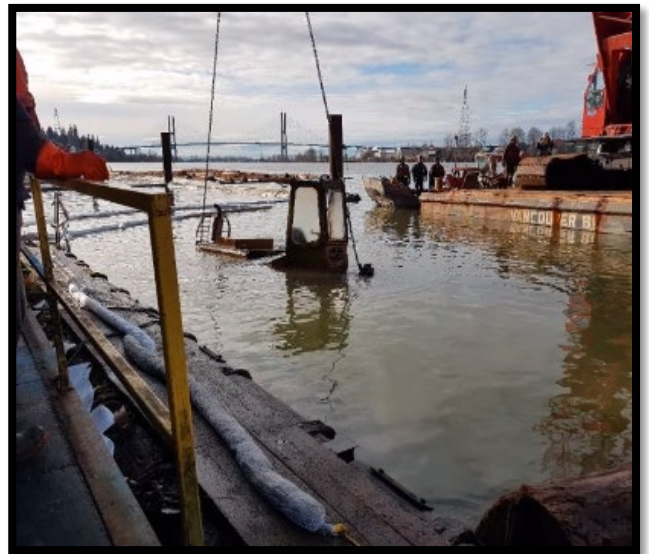
DESCRIPTION OF EVENT

While stowing bundles, a boom boat (side winder) rapidly sank in 290' of water. The Operator was able to jump clear and was uninjured.

Possible causes: shearing of drive line mounting bolts exposed a 24" hole in the hull, or, hull was compromised, and a hole was created by impacting a log end. Side winder stayed submerged after resting on bottom at low tide. With flood tide the boat did not re-float.

SUGGESTED RECOMMENDATIONS

1. Do pre-trip inspections and confirm no (minimal) water in the hull.
2. Complete regular maintenance on the hull to prevent rust weak spots.
3. When boats out of the water, conduct thorough inspections.
4. Watch for protruding logs from bundles, especially small diameter logs.
5. Install high-water alarm in the hull.



MOST IMPORTANT TAKE AWAY

Ensure pre-trip inspections accurately identify hull weak spots or excessive water in the hull.

