

SAFETY ALERT

Vehicle Collision

May 31, 2021

Hazards

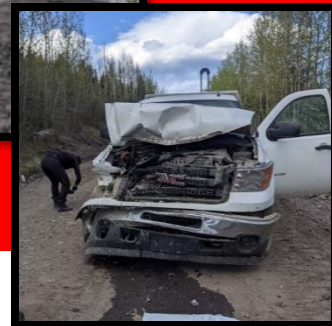
- Following too close behind another vehicle especially if dusty. If that vehicle stops or slows down, you may not know it until it is too late.
- Road maintenance work (culvert replacement) created hazards – increased dust and large depression in road.
- Dust, limiting vision, is often intermittent so you think its clear and start speeding up but it could be thick again around next corner.
- Limited visibility & reaction time of hazards coming over crest of hill or around corner.
- Narrow road and limited wide spots to pull over.
- Extra weight in the truck box and going downhill effects braking distance.

Preventative Actions

- Leave lots of room between vehicles.
- Recognize hazards (crest of hill limited visibility, narrow road, weight of ATV, travelling downhill, road maintenance work/rough road, tired at end of day) and slow down to reduce potential and give yourself enough time to react.
- If dust is extremely bad, immediately pull over and stop until visibility has cleared, look for wide spot.
- Drive with headlights and taillights on.
- Let others know by calling on radio if you encounter a hazard or plan to slow down / pull over especially in dusty conditions.

Summary

- Two trucks with loaded ATVs were traveling down mainline at end of day.
- The first truck came over crest of hill and saw a large depression in road, slammed on brakes but still hit the depression hard. Driver slowed down to assess if the straps had loosened on ATV from impact but there was no safe place to pull over.
- The second driver was a few minutes behind. As they came over the crest of the slope, they could see brake lights in very thick dust and tried to stop but rear-ended the first truck. Driver cut hand when glass blew out.



SAFETY COMES FIRST

...and it starts with the person you see in the mirror.

