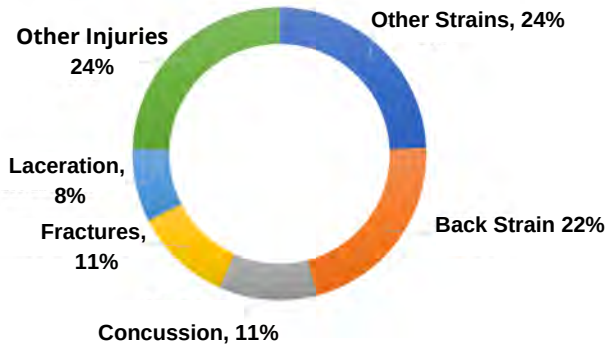


# HARVESTING

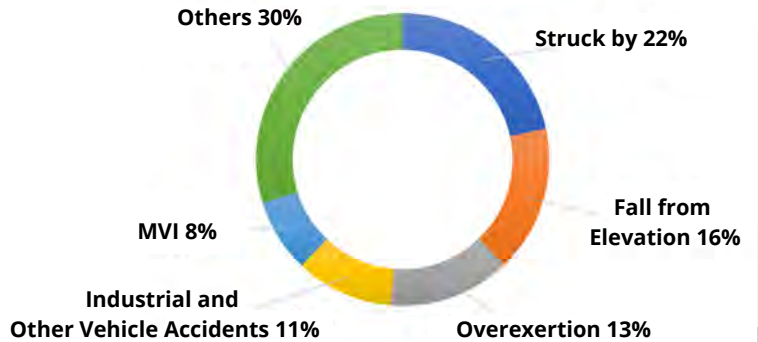
## FACT SHEET

### Mechanized Tree Falling (CU 703014) Time-loss Claims 2015 - 2019

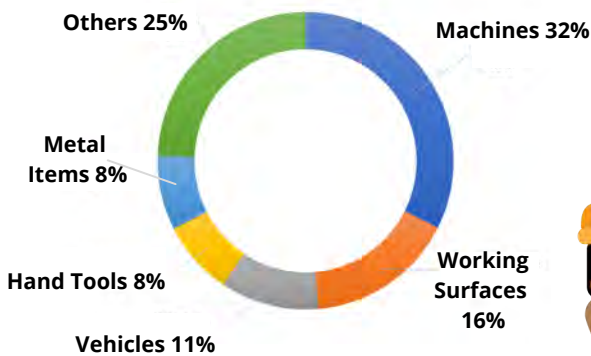
#### Nature of Injury



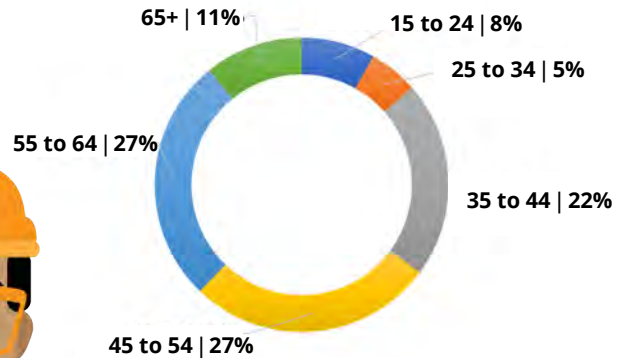
#### Mechanism of Injury



#### Source of Injury



#### Worker Age at Injury



#### Quick Facts

- 37 total time-loss claims
- \$73,429 average claim cost
- 53 days average work days lost
- 19% are serious injury claims
- 14% are long-recovery strains and sprains

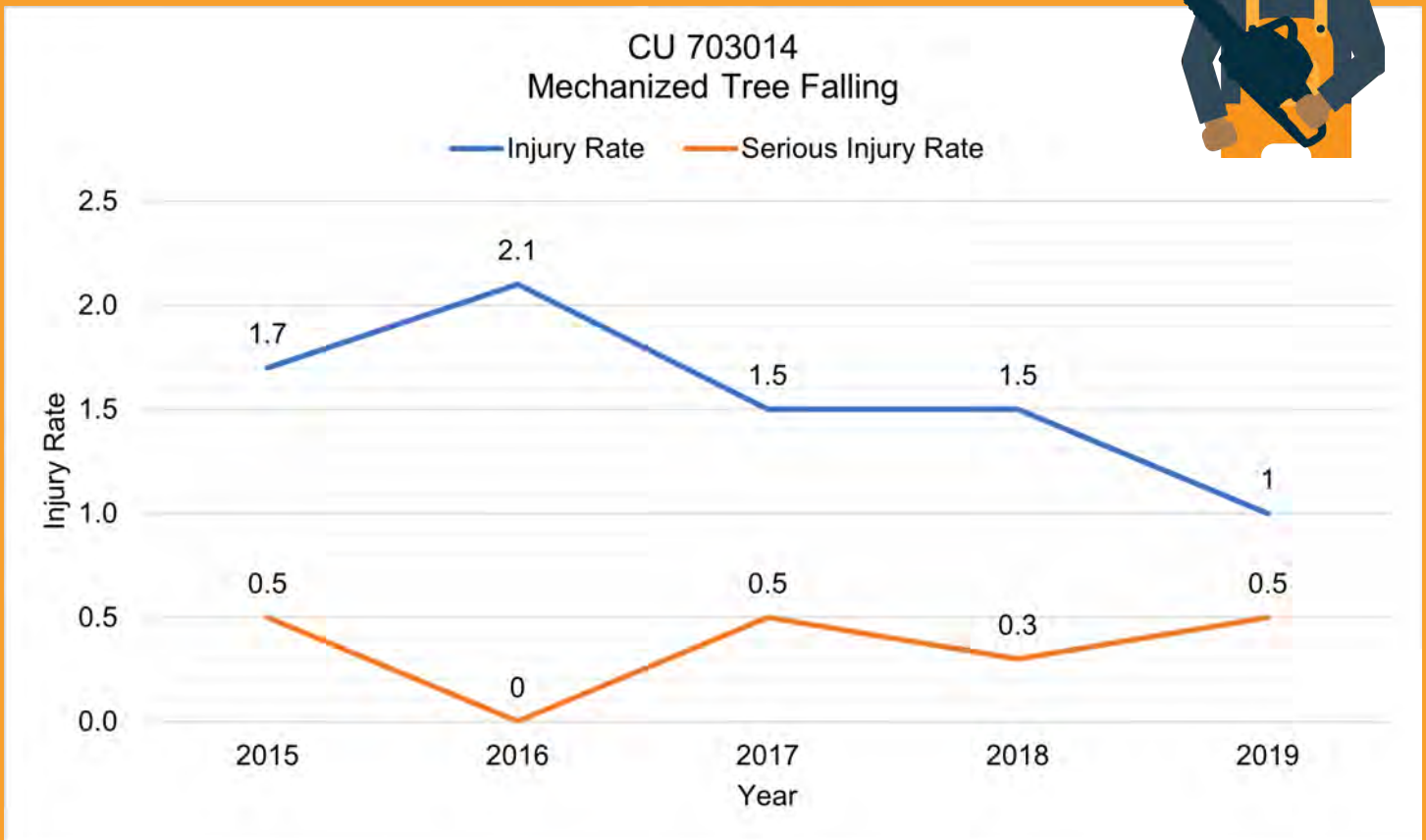


**BC Forest Safety**

Safety is good business

# HARVESTING

## FACT SHEET



# HARVESTING

## FACT SHEET



WORK SAFE BC

### CU profile (2015 to 2019)

Year: 2015, 2016, 2017 and 2 more

Customize your search

Selection

Classification Unit: 703014 - Mechanized Tree Falling  
Employer size: All

Year	Injury prevention					
	2015	2016	2017	2018	2019	
Multiple values						
# Time-loss claims	7.0	8.0	6.0	7.0	4.0	
# Person years*	413.4	379.1	408.8	467.8	410.3	
Injury rate	1.7	2.1	1.5	1.5		
# Inspection reports	55.0	53.0	48.0	68.0	55.0	
# Other contacts	12.0	6.0	14.0	13.0	10.0	
# Orders	39.0	23.0	23.0	27.0	17.0	
# Net penalties imposed	0.0	0.0	0.0	0.0	0.0	
# Warning letters sent	0.0	0.0	0.0	0.0	0.0	
Industry classification	Injury recovery					
Classification Unit	2015	2016	2017	2018	2019	
Classification Unit						
703014 - Mechanized Tr..	Six-month truncated duration	63.86	42.88	29.60	33.00	28.25
	# RTW (<= 4 weeks)**					
	# RTW (<= 26 weeks)**					
	# RTW (26+ weeks)**					
Employer size	Claim summary					
All	2015	2016	2017	2018	2019	
	# Time-loss claims	7	8	6	7	4
	# Work-related deaths			2		
	# First-paid LTD claims	1	2	3	5	2
	# Serious injury claims	2	0	2	1	2
	% Serious injury claims	29%	0%	33%	14%	50%
	Serious injury rate					
	# Sprains and strains claims	2	3	3	6	1
	# Long recovery sprains and strains claims	1	2	1	1	0
	% of sprains and strains (SS) that are long recovery	50%	67%	33%	17%	0%
	Long recovery sprains and strains rate	0.2	0.5	0.2	0.2	0.0
	# STD/LTD/Fatal claims	7	9	7	9	5
	# Young worker claims	1	1	1	0	0
	# Mature worker claims	1	4	4	3	2
	# Ergonomic claims	1	2	0	2	0
	# MVI claims	0	0	1	2	0
	Average complete duration	108	136	37	102	26
	% High duration claims	50%	43%	33%	36%	0%
	Total work days lost	960	-212	430	665	131
	Claim costs paid	\$445,680	\$149,012	\$800,400	\$641,696	\$680,081
	Insurance	2015	2016	2017	2018	2019
	# Employer-CUs	178	172	174	193	189
	Assessable payroll	\$27M	\$25M	\$27M	\$31M	\$28M
	Assessment amount	\$2M	\$2M	\$2M	\$2M	\$2M

\*For fishing subsector, # Person years will not be displayed. \*\*Return-to-work data prior to 2011 is not measured.