

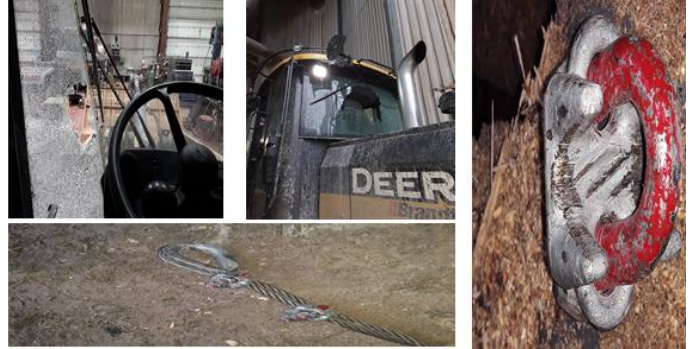
MANUFACTURING SAFETY ALERT

ASK YOURSELF
"Could it happen here?"

DESCRIPTION OF EVENT:

Serious Near Miss Pulling Cable with Loader

Tradesmen were replacing a conveyor drag chain using a winch to pull the drag chain through the conveyor. When the winch failed, the crew elected to use a loader to pull the chain through the conveyor (they did not revise the FLHA). The cable used for the job was 5/8" and secured by two clamps. As the loader pulled, the cable slipped through the clamps causing the cable to recoil, propelling one of the clamps through the front and out the rear window of the loader. (The loop in cable was not prepared to clamp manufacturer's specifications of three clamps torqued to 95 ft-lbf).



SUGGESTED ACTIONS:

- Ensure that the FLHA's are updated when the scope of a task changes.
- Factor the load rating of equipment and tools into a job plan and risk assessment.
- Develop rigging training to address the deficiencies identified in this incident.
- Develop a Safe Work Procedure for changing drag chains.

Most Important Take Away:

When the scope of a job changes re-do the FLRA. Also consider developing a Level II High Risk Hazard Assessment (HRHA) for jobs that have a higher risk and/or are non-routine.

