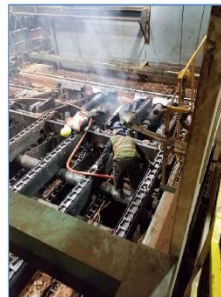


## DESCRIPTION OF EVENT

### Fall from Elevation - Hot Work

A contractor was welding on some head rig infeed jump chains. A fire developed underneath the infeed chains.

The Fire Watch and Welder were unsuccessful in extinguishing the fire from a safe location and changed their position to get a better angle at the fire. This put them at risk for a 12 to 15 foot fall into the conveyor below. Neither was wearing fall protection at the time.



## SUGGESTED ACTIONS

- Conduct a detailed FLHA prior to commencing any Hot Work. Include in the FLHA a plan of action for emergency cases before the work begins.
- The Hot Work permit process requires that all flammable and combustible material be removed prior to commencement of Hot Work. Develop a system to audit the Hot Work Permit process and compliance of removing flammables prior to work commencing.
- During an emergency, always evaluate all potential hazards before attempting to respond.

## IMPORTANT TAKE AWAY

As part of the Hot Work Permit and Field Level Hazard Assessment (FLHA) process develop an emergency plan for identified potential emergencies.

