

Managing Wildlife/ Dangerous Trees

Tree Characteristics

Many characteristics that make trees dangerous also make them valuable to wildlife. A Qualified Wildlife/Dangerous Tree Assessor can determine if these trees can be left standing to:

✓ **PROTECT WILDLIFE HABITAT** ✓ **MAINTAIN WORKER SAFETY**



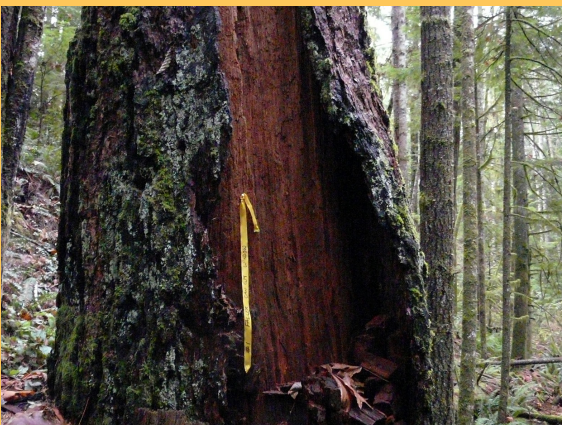
Large Dead Limb



Nest Cavity



Decay



Loose Bark



Split Trunk



Broken or Dead Top

TIPS for working safely around these types of trees:

- ✓ Get training on wildlife and dangerous tree assessment and management.
- ✓ Maintain situational awareness by constantly watching for hazards like the ones identified above.
- ✓ As wind speed increases, so does the risk to workers. Set wind speed limits for your work and get out of the woods when those limits are exceeded.

FIND OUT MORE

**Managing Wildlife/
Dangerous Trees**

[www.bcforestsafe.org/
node/3097](http://www.bcforestsafe.org/node/3097)



BC Forest Safety