

DESCRIPTION OF EVENT

VFD SET WORKS NOT PART OF LOCKOUT PROCEDURE

Employees and a supervisor performed a pre-work hazard assessment and corresponding lockout procedure for a Planer Head Change.

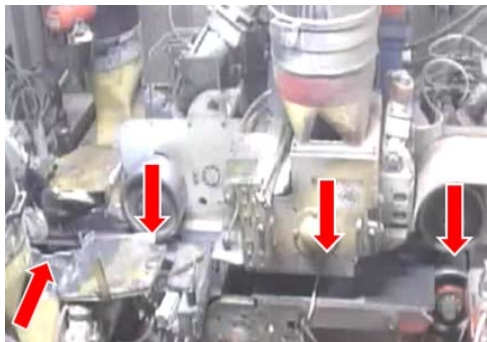
Sometime later an Electrician informed the Planer Supervisor and employees performing the head change that the PLC needed to be taken offline for an update.

When the update was completed and the employees were in the clear, the Electrician turned the PLC back into run mode. At this time the planer heads moved back into their home position. This had the potential to cause injury if the employees were still in the bite.

During the investigation it was determined that the Planer Heads Positioning VFD Set Works was not part of the lockout procedure.

SUGGESTED ACTIONS

- Review and revise Planer Head Change Lockout Procedure to include the Planer Heads Positioning VFD Set Works. This review should include an Electrician knowledgeable in the VFD set works.
- Perform a Lockout Procedure Audit on all set work lockout procedures throughout the mill.
- Consider incorporating the VFD Set Works into the Planer Main Disconnect.



IMPORTANT TAKE AWAY

Always ensure employees are in the clear when equipment (or associated drives) is re-energized.

