

EMERGENCY PLANS

EXPECT THE UNEXPECTED

Always plan ahead! Be prepared! Weather can change very quickly; vehicles can break down; people get lost; first aid emergencies can happen at any time. Make sure you know where you are going, what facilities and emergency services are available near by. Make note of the emergency numbers for your area - 911 doesn't work in all areas of the province.

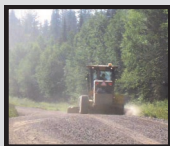
CHECK IN

Complete a trip plan and provide it to a dependable person. Identify where you are going and when to expect your return. Work together with that person to develop an action plan in case you don't return home at the planned time. If you make any changes to your trip plan make sure that you let them know.

If you are lost or stranded, stay with your vehicle; it will provide shelter until help arrives. Often, it is easier for rescuers to find a vehicle than an individual in the woods. Check out the [BC Search and Rescue Association](http://www.bcsearchandrescue.org) website for more tips and links.

Rules of the Road

- Drive safe speeds, according to road and weather conditions.
- Obey the speed limit, & never exceed 80km/hr.
- Don't call/text and drive.
- Don't drink and drive.
- Wear your seatbelt.
- Drive with head and tail lights on.
- Yield to industrial traffic.
- Stop in a safe, visible location.
- Observe & obey road signs.
- Drive on the right hand side of the road.
- Have your driver's licence and insurance.



Remember to

- Stay Alert – Focus on driving!
- Use caution – expect the unexpected!
- Watch out for wildlife.
- Extinguish all flames and sparks.
- Report forest fires.
- Pack it out – don't litter.
- Watch the road – dust means traffic.
- Be observant – road conditions change rapidly.
- Use the same rules as on the highway.

FURTHER INFORMATION

For more information please contact your local Ministry of Forests, Lands and Natural Resource Operations office or the BC Forest Safety Council.

Wildfire Reporting: 1-800-663-5555

*5555 on a cell

BC Forest Safety Council: 1-877-741-1060

Crime Stoppers: 1-800-222-8477

Service BC: 1-800-663-7867

Report all Poachers and Polluters (R.A.P.P.):

1-877-952-7277

Emergency Management BC: 1-800-663-3456

Search and Rescue BC: www.bcsara.com

Natural Resource Violation Reporting:

1-844-676-8477



Ministry of
Forests, Lands and
Natural Resource Operations

www.gov.bc.ca/for



BC Forest Safety

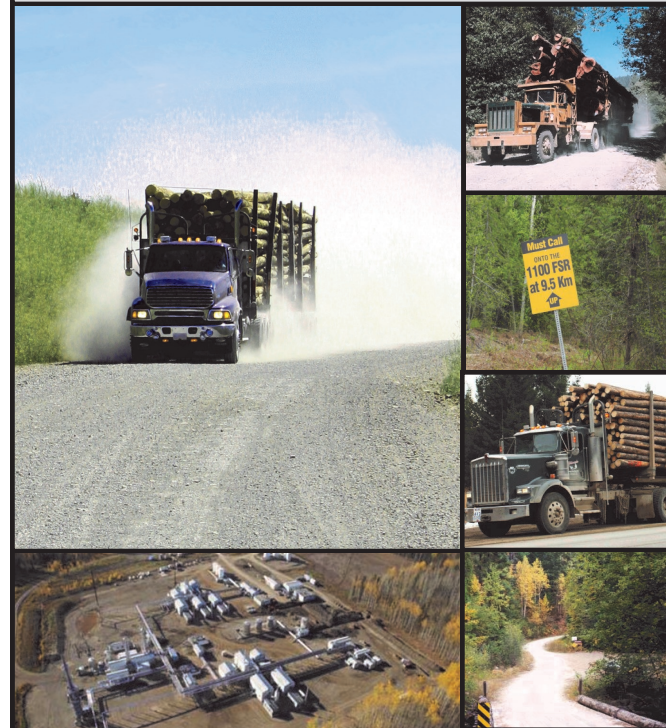
Safety is **good** business

www.bcforestsafe.org

RESOURCE ROAD USER SAFETY GUIDE

Resource roads are constructed to develop and protect BC's natural resources. They're used primarily by industrial vehicles engaged in forestry, mining, oil and gas or agriculture operations. They also provide access to recreational opportunities. Resource roads are not built to the same standard as highways.

Resource road users must be cautious.



This brochure describes what you may expect on resource roads and describes general driving guidelines; follow them and contribute to the safety of all resource road users.



RESOURCE ROADS

WHAT TO EXPECT

Most resource roads have gravel surfaces and are narrow (often one lane wide). There may be roadside brush limiting visibility, soft shoulders, and little to no ditch. Roads will have more, tighter curves and road grades may be much steeper than you encounter on highways.

Resource roads might not have signs identifying hazards, or barriers at dangerous or steep road sections. Common hazards you'll need to consider: high traffic volumes; poor visibility due to smoke, dust or fog; passing or being passed on narrow roads; changing road surface conditions; freezing rain or snow; others failing to follow traffic control procedures; wildlife and other unmarked hazards.

VEHICLE AND LOAD SIZE

Some industrial vehicles are **very** large, long and/or wide; you may need to clear out of their way. There might not be a pilot car ahead of large, long or wide vehicles.

Yield to industrial traffic. Large industrial vehicles can't manoeuvre as quickly as passenger vehicles - give these vehicles room so workers can safely do their job. As a cautionary approach, follow industrial vehicles at a safe distance - watch them, slow down and pull over if they do.

Watch out for off road vehicles (ORV's): e.g ATV's, dirt bikes, etc. Be prepared for them to be around any corner. All ORV operators must follow the rules of the road including watching for and yielding to other traffic. For ORV licensing and registration guidelines visit the ICBC website.

ROAD CONDITION

Expect rough surfaces, potholes, sinkholes, washouts, water bars and cross ditches. Damage might not be marked. Roads might not be drivable, they may be overgrown or not ploughed - even though found on a map or GPS.

OBSERVE AND OBEY SIGNS

Read and understand signs at the start of the road and along the way. Signs communicate important information about the road, mobile radio channel, road restrictions, traffic you can expect and more.

DRIVING GUIDELINES



DRIVE TO ROAD CONDITIONS

When visibility is impaired due to weather, time of day, dust or other reasons or when roads are slippery, slow down so you can react to traffic, potholes, wildlife, changing road conditions and unexpected hazards.

STOP IN SAFE, VISIBLE LOCATIONS

If you must stop along an active road find a pull out; if there isn't one find a straight section with good visibility in both directions, that is wide enough for other traffic to pass and pull over onto the shoulder. Avoid stopping in a curve or on the crest of a hill.

PULL OUTS

Most resource roads have pull outs built alongside the main driving surface; pull outs may be located on either side of the road. It is OK to use a pull out on the left side but only if there is no other place available and it is safe to do so. If you have a mobile radio, use it to advise traffic that you are "clear".

BRIDGES

Most bridges on resource roads are single lane. Make sure you yield to oncoming traffic.

MOBILE RADIO USE

If you are using a mobile radio, know where you are travelling and have a radio shop program the right channels in your radio. Observe and follow posted communication instructions. If you don't have a two-way radio, wait at the beginning of **active haul roads** for a vehicle that does; follow behind that vehicle, pulling over if it does. If you wait for some time and no vehicle comes, proceed with extreme caution.

FOLLOW THE
"3 Cs"

Caution
Courtesy
Concentration



SLOW DOWN

DRIVE SAFE SPEEDS

- Some resource roads do not have posted speed limits. It's the **driver's responsibility** to travel speeds reflective of road conditions.
- If not otherwise posted, the maximum speed on a resource road in BC is 80 km/hr.
- When limits are posted, you must obey them; these limits are enforceable.
- Do not overtake industrial vehicles unless the driver pulls over and signals that it is safe to pass.
- Take the time to plan your trip. Allow additional travel time so you will arrive on time or early to your destination.
- Avoid travelling resource roads in the dark.
- Don't try to keep up. Drive the speed appropriate for conditions, your knowledge and skill level.



SMOKING, WILDFIRES, GARBAGE & VANDALISM

- Make sure you use an ashtray and thoroughly extinguish all flames, sparks and sources of ignition.
- Keep trash inside your vehicle, look in the box of your pickup to make sure there are no loose items that could fly out. Pack it in, pack it out.
- Signs are in place to ensure road user safety. Do not damage signs or traffic control devices.
- Please report wildfires, littering, vandalism, suspicious activity and perceived environmental damage to the company responsible for maintenance (posted at the start of the road), the Ministry of Forests, Lands and Natural Resource Operations or Crime Stoppers.