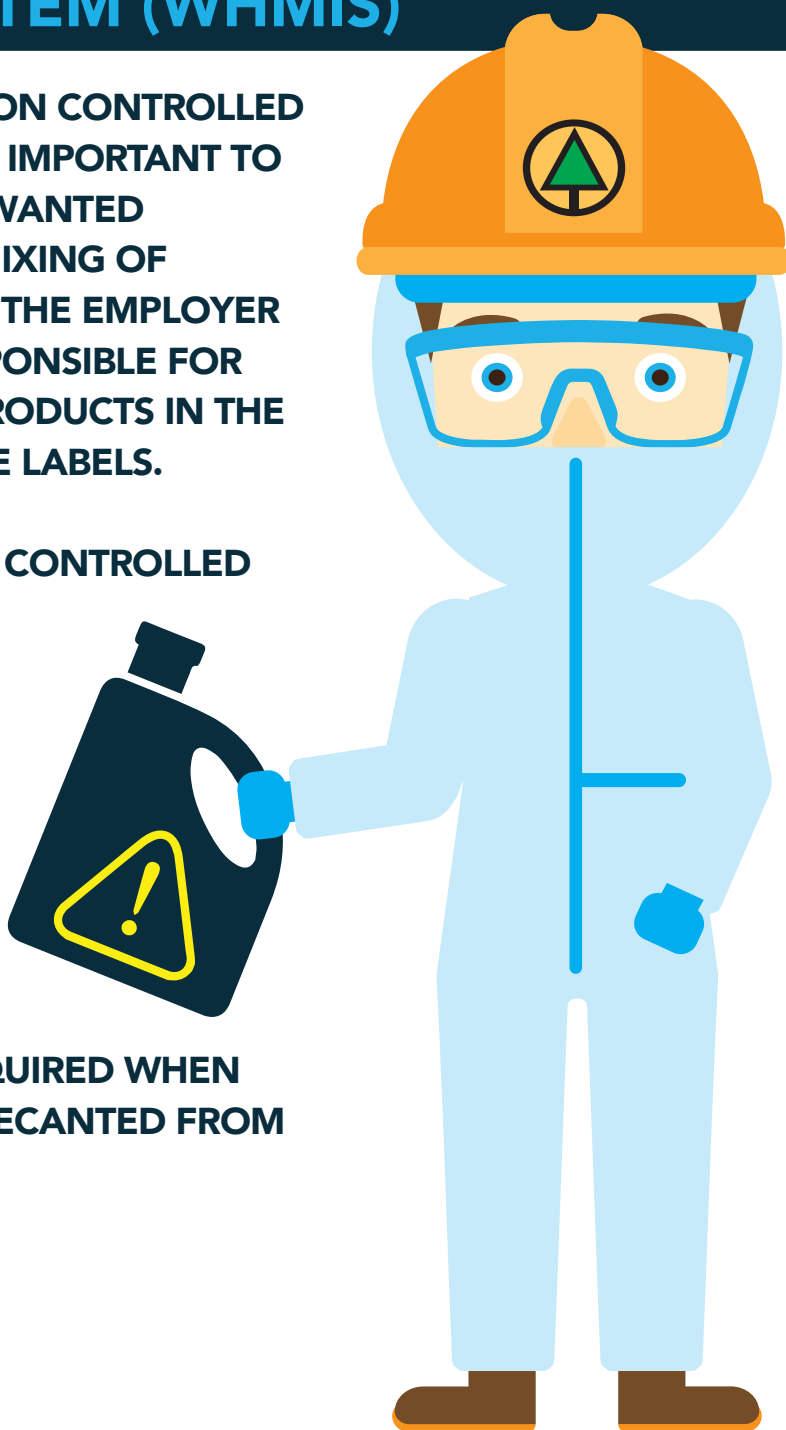


GLOBALLY HARMONIZED SYSTEM

(GHS)/ WORKPLACE HAZARDOUS MATERIALS INFORMATION SYSTEM (WHMIS)

PLACING WORKPLACE LABELS ON CONTROLLED PRODUCT CONTAINERS IS VERY IMPORTANT TO MINIMIZE THE CHANCE OF UNWANTED EXPOSURES OR DANGEROUS MIXING OF NON-COMPATIBLE CHEMICALS. THE EMPLOYER AND EMPLOYEES ARE ALL RESPONSIBLE FOR LABELLING OR RELABELLING PRODUCTS IN THE WORKPLACE WITH WORKPLACE LABELS.

- WORKPLACE LABELS FOR ALL CONTROLLED CHEMICALS.
- WORKPLACE LABELS MAY REQUIRE DIFFERENT INFORMATION ON THE LABEL DEPENDING ON THE CHEMICAL OR USE OF THAT PRODUCT.
- WORKPLACE LABELS ARE REQUIRED WHEN CONSUMER PRODUCTS ARE DECANTED FROM THEIR ORIGINAL CONTAINERS.



BC Forest Safety

Safety is good business

GLOBALLY HARMONIZED SYSTEM (GHS)/ WORKPLACE HAZARDOUS MATERIALS INFORMATION SYSTEM (WHMIS)



1) A WORKPLACE LABEL IS REQUIRED WHEN:

- **A HAZARDOUS CONTROLLED PRODUCT IS PRODUCED (MADE) AT THE WORKPLACE AND USED IN THAT WORKPLACE.**
- **A HAZARDOUS PRODUCT IS DECANTED (E.G., TRANSFERRED OR Poured) INTO ANOTHER CONTAINER.**
- **A SUPPLIER LABEL BECOMES LOST OR ILLEGIBLE (UNREADABLE).**
- **A PRODUCT IS NOT USED RIGHT AWAY OR IF MORE THAN ONE PERSON WILL BE IN CONTROL OF THE PRODUCT, A FULL WORKPLACE LABEL IS REQUIRED.**

THERE ARE TWO SITUATIONS WHEN A WORKPLACE LABEL IS NOT NECESSARY. WHEN A HAZARDOUS PRODUCT IS:

- **POURED INTO A CONTAINER AND IT IS GOING TO BE USED IMMEDIATELY.**
- **IS "UNDER THE CONTROL OF THE PERSON WHO DECANTED IT". FOR EXAMPLE, WHEN THE PERSON WHO Poured THE PRODUCT INTO ANOTHER CONTAINER WILL BE THE ONLY PERSON WHO WILL USE IT, AND THE PRODUCT WILL BE USED UP DURING ONE SHIFT, A FULL WORKPLACE LABEL MAY NOT BE REQUIRED. HOWEVER, THE CONTAINER MUST STILL BE IDENTIFIED WITH THE PRODUCT IDENTIFIER (NAME).**

2) A WORKPLACE LABEL WILL REQUIRE THE FOLLOWING INFORMATION:

- **PRODUCT IDENTIFIER: THE PRODUCT NAME EXACTLY AS IT APPEARS ON THE CONTAINER AND ON THE SAFETY DATA SHEET (SDS).**
- **SAFE HANDLING INFORMATION: STATEMENTS DESCRIBING RECOMMENDED MEASURES ON HOW TO PROPERLY HANDLE THE MATERIAL TO MINIMIZE OR PREVENT ADVERSE EFFECTS FROM EXPOSURE TO THE PRODUCT, INCLUDING PROTECTIVE EQUIPMENT AND EMERGENCY MEASURES.**
- **REFERENCE TO SDS: WHERE THE SAFETY DATA SHEET IS LOCATED FOR THE PRODUCT.**



MORE INFORMATION REGARDING WHMIS LABELLING