

ROLLOVER PREVENTION

1



LOADING

WORKING TOGETHER

- Loader men and Professional drivers must work together to ensure they maximize the GVW of the vehicle and keep the load stable so it will not move during transit
- Try to keep the largest, heaviest logs on the bottom of the load
- Always crown the load & avoid free space

2



THE LOAD

AFFECTS THE DYNAMICS OF YOUR VEHICLE

- By crowning the load you enable the securement devices to make contact with more of the logs
- Crowning also ensures that the center of mass of the load will be near the center of the track width of the trailer
- Keep the center of mass as low as possible

3



SECUREMENT

DO IT FOR THE RIGHT REASONS

- Load securement devices should be placed at locations on the load that will ensure that the load does not move
- Load movement affects a vehicles stability
- When in motion the instability can easily cause a rollover

4

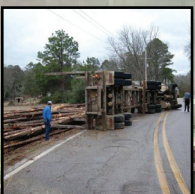


FATIGUE & INATTENTION

UNACCEPTABLE AS A PROFESSIONAL DRIVER

- Having your vehicle enter the ditch or a soft shoulder changes the center of mass and makes the vehicle more susceptible to rollover

5



SPEED & STEERING INPUT

DRIVE AS AN **ART** NOT AS AN **ACT**

- Most common cause of rollover
- When dealing with an unstable load you must slow down and keep movements subtle

