

# SAFETY ALERT

## Property Damage

January 9, 2018

### Potential Hazards

- Driving too fast for road conditions.
- Potential electrical shock due to exposure to broken powerlines that could have been still transmitting electricity.
  - Fallen or broken power lines may be energized, even if they're not sparking, smoking or making a buzzing sound.

### Preventative Actions

If your vehicle contacts a power pole, follow these steps:

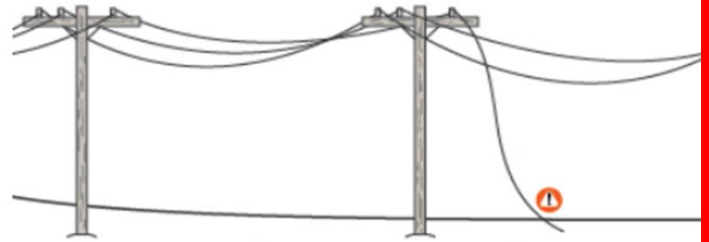
- If you can safely drive away from the power pole, do so. Travel the length of a bus (10m or 33ft) before stopping.
- If you can't drive the vehicle because you're injured, the vehicle is inoperable, or there are obstacles in your way - stay where you are. Do NOT get out of the vehicle unless there's an emergency, such as a fire in the vehicle.
- If you absolutely must get out of the vehicle (e.g. because of a fire), do not touch the vehicle and the ground at the same time with any part of your body or clothing and follow these steps:
  1. Remove any loose-fitting clothing.
  2. Use the handle to open the door of your vehicle.
  3. Stand at the opening of your door with your elbows tucked into your stomach and your hands held close to your chest.
  4. Jump out and away from the vehicle. As you exit, don't touch the door and the ground at the same time. Land with your feet together.
  5. Calmly shuffle with your feet together. Keep your feet touching as you shuffle. The heel of one foot should still be touching the toe of the other when you start moving the other leg.
  6. Keep shuffling until you are at least 10m (33 feet) or a bus-length away from the vehicle.
  7. Call 911 for help.

<Information provided by BCHydro>

### Incident Summary

- A log truck driver lost control of the truck before leaving the road, entering the ditch, and rolling over onto the driver side.
- The front bumper of the truck hit a power pole breaking it approximately 10ft above the ground.
- The power lines came loose from the top of the pole and remained suspended above the roadway and two lines became tangled in the log bunks.
- The driver was luckily wearing a seatbelt at the time and was not injured; the driver had to break through the window in order to climb out of the truck.

**Down. Danger. Dial.**



**If it's down, it's a danger, dial 911.**

### Safety Contacts

Follow up questions to ask your worker:

- 1) Can you describe the procedure you would follow if you were involved in an incident and there was a broken powerline down & close by and you were trapped in the vehicle?
- 2) What is the height clearance of your truck when it's loaded with logs, equipment, or materials and how do you ensure you won't come in contact with overhanging powerlines?



**& THINK**  
GET HOME SAFE

FOREST MANAGEMENT GROUP

